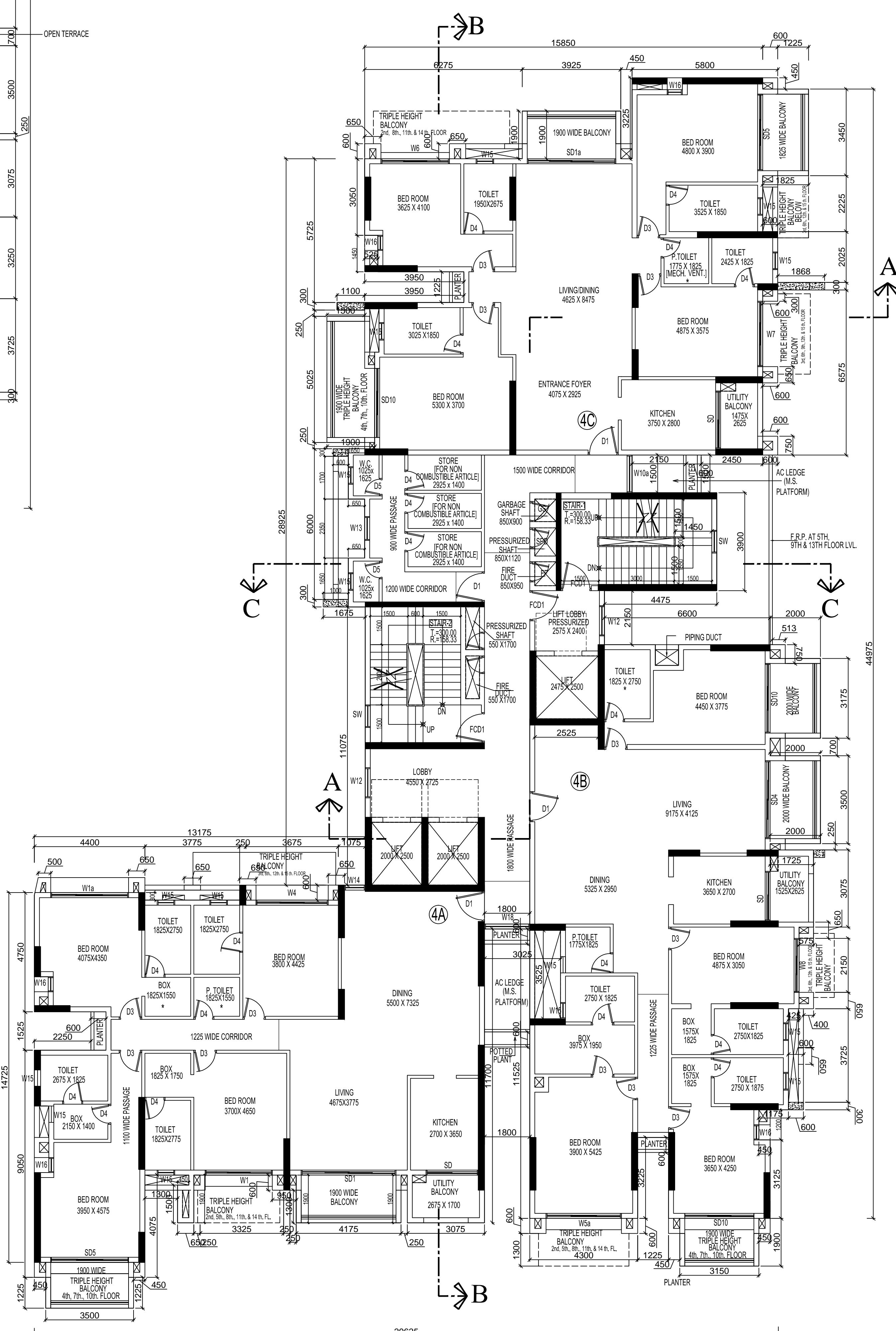
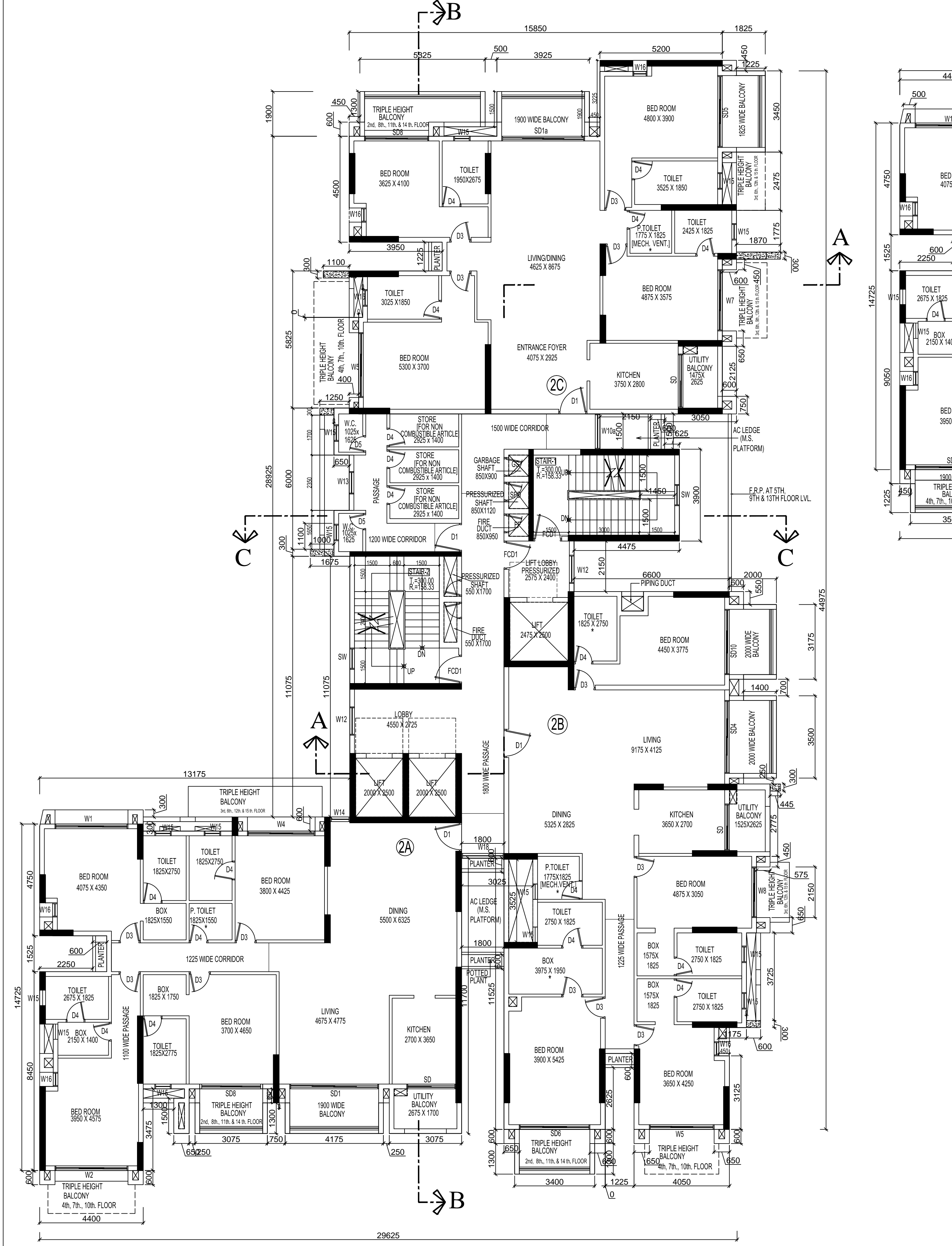


FIRST FLOOR PLAN (vl. +7050 M.)  
SCALE - 1:100



4th. FLOOR PLAN (vl. 18450 M.)  
SCALE - 1:100



2nd FLOOR PLAN (vl. +10850 M.)  
SCALE - 1:100

SHEET-04

SCHEDULE OF DOORS & WINDOWS

NO.	SYMBOL	TYPE	SIZE
SD1	2400	1775X2400	
SD1A	2400	1525X2400	
SD2	2400	2625X2400	
SD3	2400	1900X2400	
SD4	2400	1100X2400	
SD5	2400	2000X2400	
SD6	2400	2025X2400	
SD7	2400	2825X2400	
SD8	2400	2400X2400	
SD9	2400	2500X2400	
SD10	2400	2775X2400	
SD11	2400	2775X2400	
SD12	2400	2400X2400	
D1	2400	1200X2400	
D2	2400	1000X2400	
D3	2400	800X2400	
D4	2400	800X2400	
D5	2400	700X2400	
D6	2400	800X2400	
F.C.D1	2400	1200X2400	
F.C.D2	2400	1000X2400	
F.C.D3	2400	2400X2400	
F.C.D4	2400	2000X2400	
W1	150	2400	2075X2400
W1A	150	2400	1500X2400
W2	150	2400	1900X2400
W3	150	2400	2025X2400
W4	150	2400	2075X2400
W5	150	2400	2775X2400
W6	150	2400	3000X2400
W7	150	2400	2000X2400
W8	150	2400	2100X2400
W9	150	2400	1800X2400
W10	150	2400	1900X2400
W11	150	2400	1900X2400
W12	150	2400	1900X2400
W13	150	2400	1900X2400
W14	150	2400	825X2400
W15	150	2400	700X2400
W16	150	2400	800X2400
W17	150	2400	825X2400
W18	150	2400	1800X2400
W19	150	2400	1800X2400
W20	150	2400	800X2400
W21	150	2400	725X2400
W22	150	2400	725X2400
W23	150	2400	725X2400
W24	150	2400	725X2400
W25	150	2400	725X2400
W26	150	2400	725X2400
W27	150	2400	725X2400
W28	150	2400	725X2400
W29	150	2400	725X2400
W30	150	2400	725X2400
W31	150	2400	725X2400
W32	150	2400	725X2400
W33	150	2400	725X2400
W34	150	2400	725X2400
W35	150	2400	725X2400
W36	150	2400	725X2400
W37	150	2400	725X2400
W38	150	2400	725X2400
W39	150	2400	725X2400
W40	150	2400	725X2400
W41	150	2400	725X2400
W42	150	2400	725X2400
W43	150	2400	725X2400
W44	150	2400	725X2400
W45	150	2400	725X2400
W46	150	2400	725X2400
W47	150	2400	725X2400
W48	150	2400	725X2400
W49	150	2400	725X2400
W50	150	2400	725X2400
W51	150	2400	725X2400
W52	150	2400	725X2400
W53	150	2400	725X2400
W54	150	2400	725X2400
W55	150	2400	725X2400
W56	150	2400	725X2400
W57	150	2400	725X2400
W58	150	2400	725X2400
W59	150	2400	725X2400
W60	150	2400	725X2400
W61	150	2400	725X2400
W62	150	2400	725X2400
W63	150	2400	725X2400
W64	150	2400	725X2400
W65	150	2400	725X2400
W66	150	2400	725X2400
W67	150	2400	725X2400
W68	150	2400	725X2400
W69	150	2400	725X2400
W70	150	2400	725X2400
W71	150	2400	725X2400
W72	150	2400	725X2400
W73	150	2400	725X2400
W74	150	2400	725X2400
W75	150	2400	725X2400
W76	150	2400	725X2400
W77	150	2400	725X2400
W78	150	2400	725X2400
W79	150	2400	725X2400
W80	150	2400	725X2400
W81	150	2400	725X2400
W82	150	2400	725X2400
W83	150	2400	725X2400
W84	150	2400	725X2400
W85	150	2400	725X2400
W86	150	2400	725X2400
W87	150	2400	725X2400
W88	150	2400	725X2400
W89	150	2400	725X2400
W90	150	2400	725X2400
W91	150	2400	725X2400
W92	150	2400	725X2400
W93	150	2400	725X2400
W94	150	2400	725X2400
W95	150	2400	725X2400
W96	150	2400	725X2400
W97	150	2400	725X2400
W98	150	2400	725X2400
W99	150	2400	725X2400
W100	150	2400	725X2400

- SPECIFICATIONS
- R.C.C. FRAME STRUCTURE WITH CONC. GRADE 1:1:5.3.
  - 200 M.M. THK. EXTERNAL 125 M.M. THK. INTERNAL WALLS WITH 1:4 CEMENT MORTAR JOINTS.
  - ALUMINIUM WINDOWS.
  - CAST-IN-SITU MOSAIC FLOORING.
  - 1:5 & 1:4 CEMENT PLASTER ON INTERNAL WALLS AND CEILING RESPECTIVELY.
  - P.O.P. FINISH ON INTERNAL WALLS & CEILING.
  - WATER PROOFING TREATMENT.

DECLARATION OF APPLICANT.

I DO HEREBY DECLARE WITH FULL RESPONSIBILITY THAT I SHALL ENGAGE L&A & E&E DURING CONSTRUCTION I SHALL FOLLOW THE INSTRUCTIONS OF ARCHITECT. E&E & E&E DURING CONSTRUCTION OF THE BUILDING AS PER PLAN & AUTHORITY WILL NOT BE RESPONSIBLE FOR STRUCTURE OF THE BUILDING & ALL STRUCTURE OF THE BUILDING SUBMITTED DOCUMENT ARE FOR THE K.M.C. AUTHORITY WILL REVEAL THE SANCTION PLAN. THE CONSTRUCTION OF THE BUILDING SHALL BE UNDER THE GUIDANCE OF L&A & E&E BEFORE STARTING OF BUILDING FOUNDATION.

EXISTING STRUCTURE TO DEMOLISH BEFORE COMMENCEMENT OF CONSTRUCTION FULLY OCCUPIED BY THE OWNER, THERE IS NO TENANT.

FOR RUCHA CONSTRUCTION PVT. LTD.  
NAME: RUCHA TORE  
DESIGNATED PARTNER OF  
BELAN VPR ROSSING LLP  
CONSTITUTED ATTORNEY  
NAME OF OWNER

JISHNU PAL  
G.T.E.32  
NAME OF GEO-TECH ENGINEER

CERTIFICATE OF STRUCTURAL REVIEWER  
THE STRUCTURAL DESIGN OF BOTH FOUNDATION AND SUPERSTRUCTURE OF THE BUILDING HAVE BEEN MADE BY ME CONSIDERING ALL POSSIBLE LOADS INCLUDING THE SEISMIC LOAD AS PER RULE OF INDIA AND I CERTIFY THAT IT IS SAFE AND STABLE IN ALL RESPECT. SOIL INVESTIGATION HAS BEEN CARRIED OUT BY JISHNU PAL G.T.E.32. THE RECOMMENDATION OF WHICH HAS BEEN FOLLOWED IN PREPARING STRUCTURAL DESIGN & CALCULATION. THE STRUCTURE IS SAFE AND STABLE IN ALL RESPECT.

SANJIV GUHA  
E.S.R. 8816  
NAME OF STRUCTURAL REVIEWER

DECLARATION OF STRUCTURAL ENGINEER  
THE STRUCTURAL DESIGN OF BOTH FOUNDATION AND SUPERSTRUCTURE OF THE BUILDING HAVE BEEN MADE BY ME CONSIDERING ALL POSSIBLE LOADS INCLUDING THE SEISMIC LOAD AS PER RULE OF INDIA AND I CERTIFY THAT IT IS SAFE AND STABLE IN ALL RESPECT. SOIL INVESTIGATION HAS BEEN CARRIED OUT BY JISHNU PAL G.T.E.32. THE RECOMMENDATION OF WHICH HAS BEEN FOLLOWED IN PREPARING STRUCTURAL DESIGN & CALCULATION. THE STRUCTURE IS SAFE AND STABLE IN ALL RESPECT.

SANJIV J. PAREKH  
E.S.E. 1041  
NAME OF STRUCTURAL ENGINEER

DECLARATION OF ARCHITECT  
I CERTIFY THAT THE PLAN ITSELF WITH FULL RESPONSIBILITY THAT THE BUILDING PLAN HAS DRAWN UP AS PER PROVISION OF K.M.C. BUILDING RULES 2009 AS AMENDED FROM TIME TO TIME AND THE SITE CONDITION INCLUDING THE ADJUTING ROAD IS CONFORM WITH THE PLAN. IT IS A BUILDABLE SITE NOT A FLOOD PRONE OR RAIN FLOOD AREA.

MITUL SHUKLA  
C.A / 2004 / 33251  
NAME OF ARCHITECT

PROJECT NAME:  
PROPOSED PLAN OF B+G+XVII STORED RESIDENTIAL BUILDING OF HEIGHT 72.85 M. AT PREMISES NO 52D, BONDEL ROAD, P.S. KARAYA, WARD NO - 065, BOROUGH - VII, KOLKATA - 700019, U/S - 393A OF K.M.C. ACT, 1980 READ WITH RULE - 69 A (1)(a) OF K.M.C. BUILDING RULE 2009"

TYPICAL FLOOR PLAN  
(1ST, 2ND, 4TH. FLOOR)

SCALE : DRAWN BY: CHECKED BY:  
1:100, 800, 4000 RATAN MITUL SHUKLA

DRG. NO.  
MAY/21/EODB/04

ARCHITECT :  
Mass & Void Architect & Interior Consulting

56 Christopher Road,  
4th Floor, 4th, 5th, 6th, 7th, 8th, 9th, 10th, 11th, 12th, 13th, 14th, 15th, 16th, 17th, 18th, 19th, 20th, 21st, 22nd, 23rd, 24th, 25th, 26th, 27th, 28th, 29th, 30th, 31st, 32nd, 33rd, 34th, 35th, 36th, 37th, 38th, 39th, 40th, 41st, 42nd, 43rd, 44th, 45th, 46th, 47th, 48th, 49th, 50th, 51st, 52nd, 53rd, 54th, 55th, 56th, 57th, 58th, 59th, 60th, 61st, 62nd, 63rd, 64th, 65th, 66th, 67th, 68th, 69th, 70th, 71st, 72nd, 73rd, 74th, 75th, 76th, 77th, 78th, 79th, 80th, 81st, 82nd, 83rd, 84th, 85th, 86th, 87th, 88th, 89th, 90th, 91st, 92nd, 93rd, 94th, 95th, 96th, 97th, 98th, 99th, 100th, 101st, 102nd, 103rd, 104th, 105th, 106th, 107th, 108th, 109th, 110th, 111th, 112th, 113th, 114th, 115th, 116th, 117th, 118th, 119th, 120th, 121st, 122nd, 123rd, 124th, 125th, 126th, 127th, 128th, 129th, 130th, 131st, 132nd, 133rd, 134th, 135th, 136th, 137th, 138th, 139th, 140th, 141st, 142nd, 143rd, 144th, 145th, 146th, 147th, 148th, 149th, 150th, 151st, 152nd, 153rd, 154th, 155th, 156th, 157th, 158th, 159th, 160th, 161st, 162nd, 163rd, 164th, 165th, 166th, 167th, 168th, 169th, 170th, 171st, 172nd, 173rd, 174th, 175th, 176th, 177th, 178th, 179th, 180th, 181st, 182nd, 183rd, 184th, 185th, 186th, 187th, 188th, 189th, 190th, 191st, 192nd, 193rd, 194th, 195th, 196th, 197th, 198th, 199th, 200th, 201st, 202nd, 203rd, 204th, 205th, 206th, 207th, 208th, 209th, 210th, 211st, 212nd, 213th, 214th, 215th, 216th, 217th, 218th, 219th, 220th, 221st, 222nd, 223rd, 224th, 225th, 226th, 227th, 228th, 229th, 230th, 231st, 232nd, 233rd, 234th, 235th, 236th, 237th, 238th, 239th, 240th, 241st, 242nd, 243rd, 244th, 245th, 246th, 247th, 248th, 249th, 250th, 251st, 252nd, 253rd, 254th, 255th, 256th, 257th, 258th, 259th, 260th, 261st, 262nd, 263rd, 264th, 265th, 266th, 267th, 268th, 269th, 270th, 271st, 272nd, 273rd, 274th, 275th, 276th, 277th, 278th, 279th, 280th, 281st, 282nd, 283rd, 284th, 285th, 286th, 287th, 288th, 289th, 290th, 291st, 292nd, 293rd, 294th, 295th, 296th, 297th, 298th, 299th, 300th, 301st, 302nd, 303rd, 304th, 305th, 306th, 307th, 308th, 309th, 310th, 311st, 312nd, 313th, 314th, 315th, 316th, 317th, 318th, 319th, 320th, 321st, 322nd, 323rd, 324th, 325th, 326th, 327th, 328th, 329th, 330th, 331st, 332nd, 333rd, 334th, 335th, 336th, 337th, 338th, 339th, 340th, 341st, 342nd, 343rd, 344th, 345th, 346th, 347th, 348th, 349th, 350th, 351st, 352nd, 353rd, 354th, 355th, 356th, 357th, 358th, 359th, 360th, 361st, 362nd, 363rd, 364th, 365th, 366th, 367th, 368th, 369th, 370th, 371st, 372nd, 373rd, 374th, 375th, 376th, 377th, 378th, 379th, 380th, 381st, 382nd, 383rd, 384th, 385th, 386th, 387th, 388th, 389th, 390th, 391st, 392nd, 393rd, 394th, 395th, 396th, 397th, 398th, 399th, 400th, 401st, 402nd, 403rd, 404th, 405th, 406th, 407th, 408th, 409th, 410th, 411st, 412nd, 413th, 414th, 415th, 416th, 417th, 418th, 419th, 420th, 421st, 422nd, 423rd, 424th, 425th, 426th, 427th, 428th, 429th, 430th, 431st, 432nd, 433rd, 434th, 435th, 436th, 437th, 438th, 439th, 440th, 441st, 442nd, 443rd, 444th, 445th, 446th, 447th, 448th, 449th, 450th, 451st, 452nd, 453rd, 454th, 455th, 456th, 457th, 458th, 459th, 460th, 461st, 462nd, 463rd, 464th, 465th, 466th, 467th, 468th, 469th, 470th, 471st, 472nd, 473rd, 474th, 475th, 476th, 477th, 478th, 479th, 480th, 481st, 482nd, 483rd, 484th, 485th, 486th, 487th, 488th, 489th, 490th, 491st, 492nd, 493rd, 494th, 495th, 496th, 497th, 498th, 499th, 500th, 501st, 502nd, 503rd, 504th, 505th, 506th, 507th, 508th, 509th, 510th, 511st, 512nd, 513th, 514th, 515th, 516th, 517th, 518th, 519th, 520th, 521st, 522nd, 523rd, 524th, 525th, 526th, 527th, 528th, 529th, 530th, 531st, 532nd, 533rd, 534th, 535th, 536th, 537th, 538th, 539th, 540th, 541st, 542nd, 543rd, 544th, 545th, 546th, 547th, 548th, 549th, 550th, 551st, 552nd, 553rd, 554th, 555th, 556th, 557th, 558th, 559th, 560th, 561st, 562nd, 563rd, 564th, 565th, 566th, 567th, 568th, 569th, 570th, 571st, 572nd, 573rd, 574th, 575th, 576th, 577th, 578th, 579th, 580th, 581st, 582nd, 583rd, 584th, 585th, 586th, 587th, 588th, 589th, 590th, 591st, 592nd, 593rd, 594th, 595th, 596th, 597th, 598th, 599th, 600th, 601st, 602nd, 603rd, 604th, 605th, 606th, 607th, 608th, 609th, 610th, 611st, 612nd, 613th, 614th, 615th, 616th, 617th, 618th, 619th, 620th, 621st, 622nd, 623rd, 624th, 625th, 626th, 627th, 628th, 629th, 630th, 631st, 632nd, 633rd, 634th, 635th, 636th, 637th, 638th, 639th, 640th, 641st, 642nd, 643rd, 644th, 645th, 646th, 647th, 648th, 649th, 650th, 651st, 652nd, 653rd, 654th, 655th, 656th, 657th, 658th, 659th, 660th, 661st, 662nd, 663rd, 664th, 665th, 666th, 667th, 668th, 669th, 670th, 671st, 672nd, 673rd, 674th, 675th, 676th, 677th, 678th, 679th, 680th, 681st, 682nd, 683rd, 684th, 685th, 686th, 687th, 688th, 689th, 690th, 691st, 692nd, 693rd, 694th, 695th, 696th, 697th, 698th, 699th, 700th, 701st, 702nd, 703rd, 704th, 705th, 706th, 707th, 708th, 709th, 710th, 711st, 712nd, 713th, 714th, 715th, 716th, 717th, 718th, 719th, 720th, 721st, 722nd, 723rd, 724th, 725th, 726th, 727th, 728th, 729th, 730th, 731st, 732nd, 733rd, 734th, 735th, 736th, 737th, 738th, 739th, 740th, 741st, 742nd, 743rd, 744th, 745th, 746th, 747th, 748th, 749th, 750th, 751st, 752nd, 753rd, 754th, 755th, 756th, 757th, 758th, 759th, 760th, 761st, 762nd, 763rd, 764th, 765th, 766th, 767th, 768th, 769th, 770th, 771st, 772nd, 773rd, 774th, 775th, 776th, 777th, 778th, 779th, 780th, 781st, 782nd, 783rd, 784th, 785th, 786th, 787th, 788th, 789th, 790th, 791st, 792nd, 793rd, 794th, 795th, 796th, 797th, 798th, 799th, 800th, 801st, 802nd, 803rd, 804th, 805th, 806th, 807th, 808th, 809th, 810th, 811st,